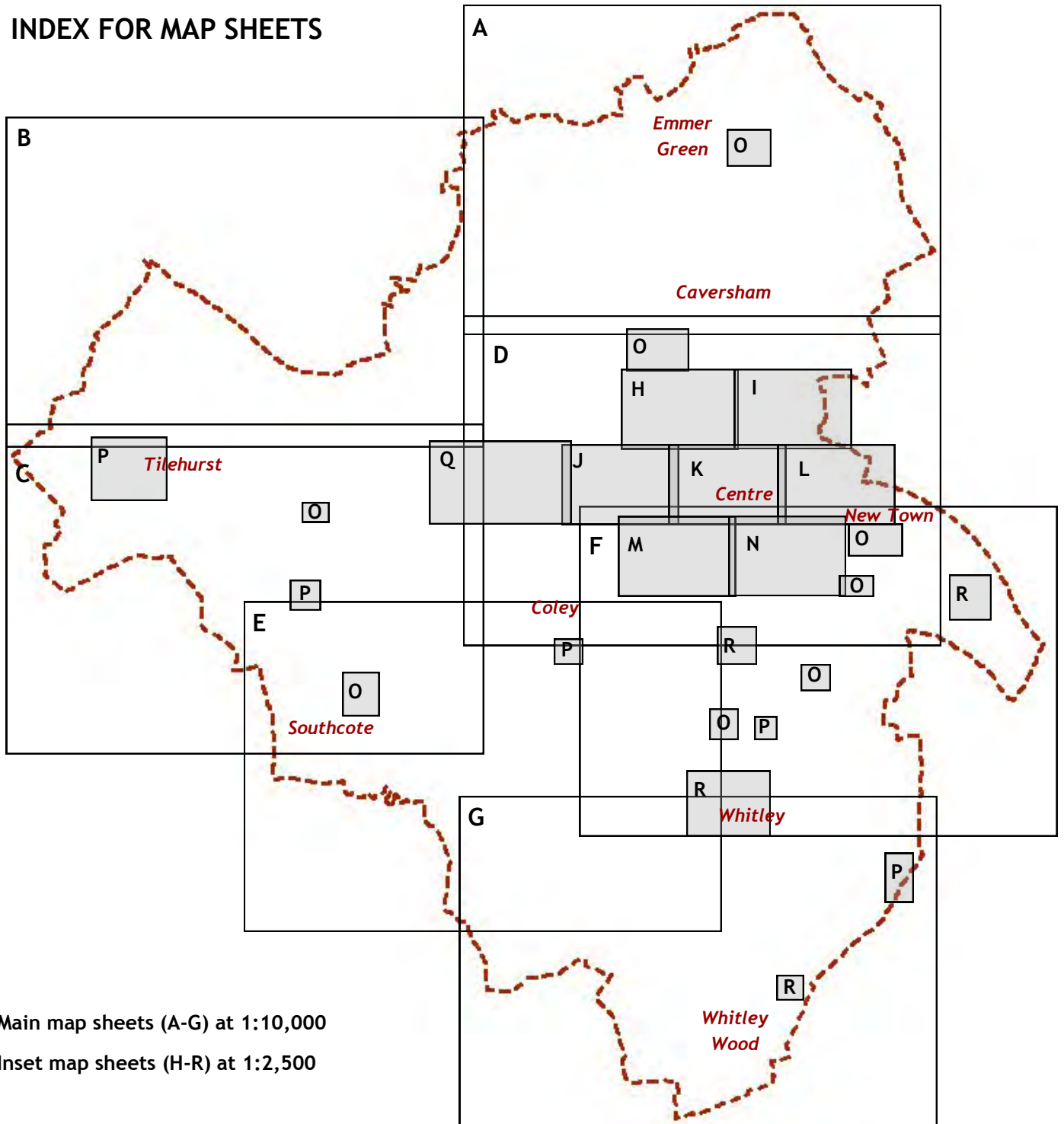


INDEX FOR MAP SHEETS



Main map sheets (A-G) at 1:10,000

Inset map sheets (H-R) at 1:2,500

PROPOSALS MAP KEY

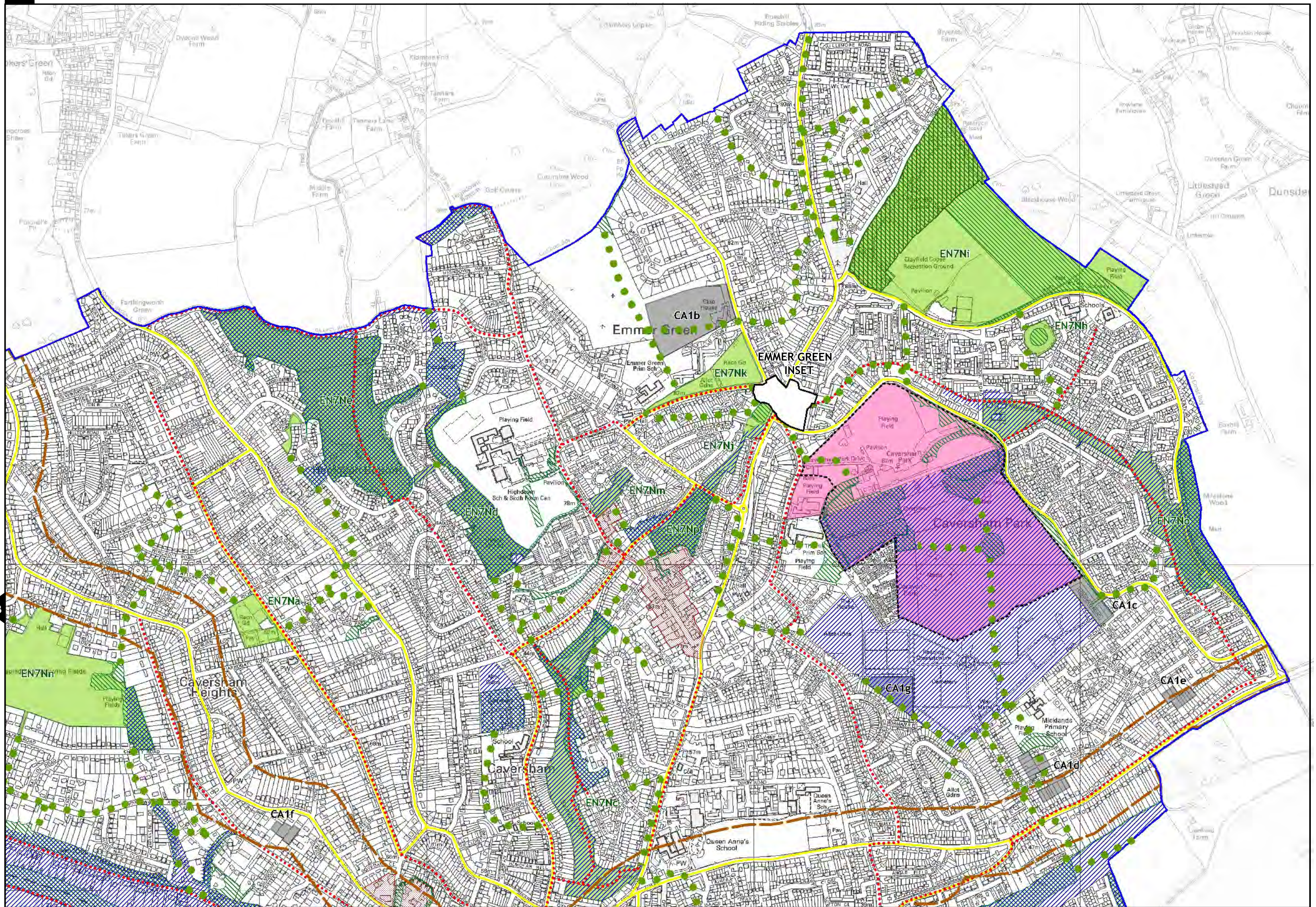
	Reading Borough boundary		Cycle Routes* (see policy TR4)
	Conservation area* (see policies EN1, EN3)		Boundary of identified centre ³ (policy RL1) (also shows boundaries of inset maps)
	Boundary of Article 4 Direction* (see policies EN1, H7)		Key frontage in district and local centres (policy RL3)
	Scheduled Ancient Monument* (see policy EN1)		Major Hazard Sites* (see policy OU2)
	Historic Park or Garden* (see policy EN1)		Primary Shopping Area (policy CR1)
	Area of archaeological potential (policy EN2)		Office Core (policy CR1)
	Local Green Space and Public Open Space (policy EN7)		Central Core (policy CR1)
	Area of identified biodiversity interest* ¹ (see policy EN7)		Designated primary frontage in Central Reading (existing) (policy CR7)
	Existing or proposed Green Link (policy EN7)		Designated primary frontage in Central Reading (proposed) (policy CR7)
	Major Landscape Feature (policy EN13)		Terraced housing in Central Reading (policy CR9)
	Boundary of Area of Outstanding Natural Beauty* (see policy EN13)		Tall buildings cluster (policy CR10)
	Ancient Woodland* (see policy EN14)		Major Opportunity Area boundary (policies CR11-13 and SR1-3)
	Air Quality Management Area* (see policy EN15)		Site identified for development or change (policies CR11-14, SR1-4, WR1-3, CA1, ER1)
	Core Employment Area (policy EM2)		Abbey Quarter (policy CR15)
	Major Transport Project ² (policy TR2)		Leisure and recreation use of the Kennetside areas (policy SR5)
	Area safeguarded for Crossrail* (see policy TR2)		Caversham Park (policy CA2)
	M4 Smart Motorway project* (see policy TR2)		Whiteknights Campus, University of Reading (policy ER2)
	Classified Highway Network* (see policy TR3)		Royal Berkshire Hospital (policy ER3)

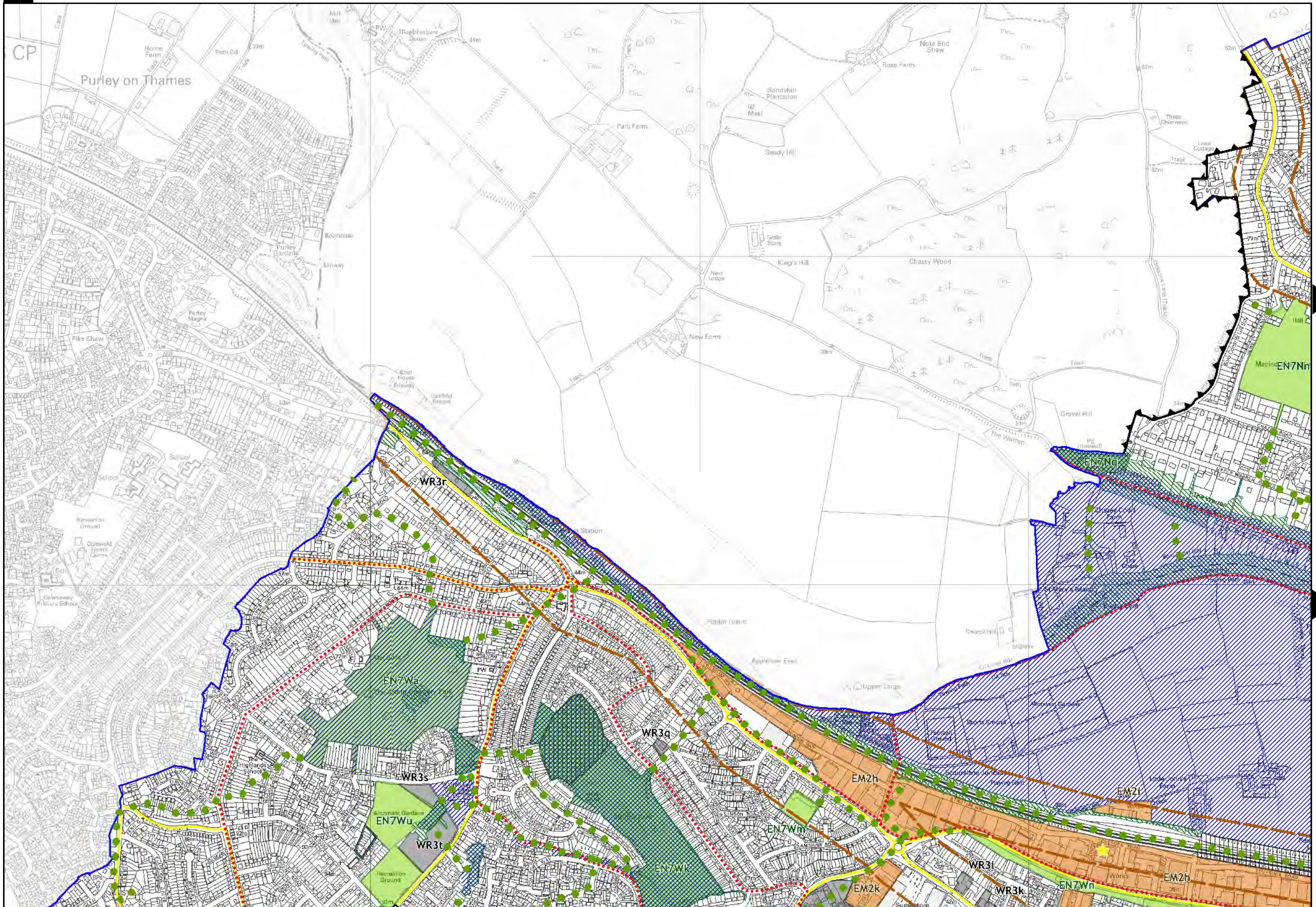
* Denotes a contextual designation, i.e. a designation that the Local Plan does not control.

¹ Includes Local Wildlife Sites, Local Nature Reserves, Biodiversity Opportunity Areas, protected and priority species and their habitats, Priority and Biodiversity Action Plan habitats, the River Thames and its tributaries (including the River Kennet and the Kennet and Avon Canal)

² Shows only those Major Transport Projects that are at a stage where they can be shown on the Proposals Map—please see policy TR2 for a full list

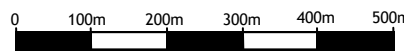
³ Where the boundary of Reading Centre is shown, this is the boundary within which the Central Reading policies (CR1-15) will apply





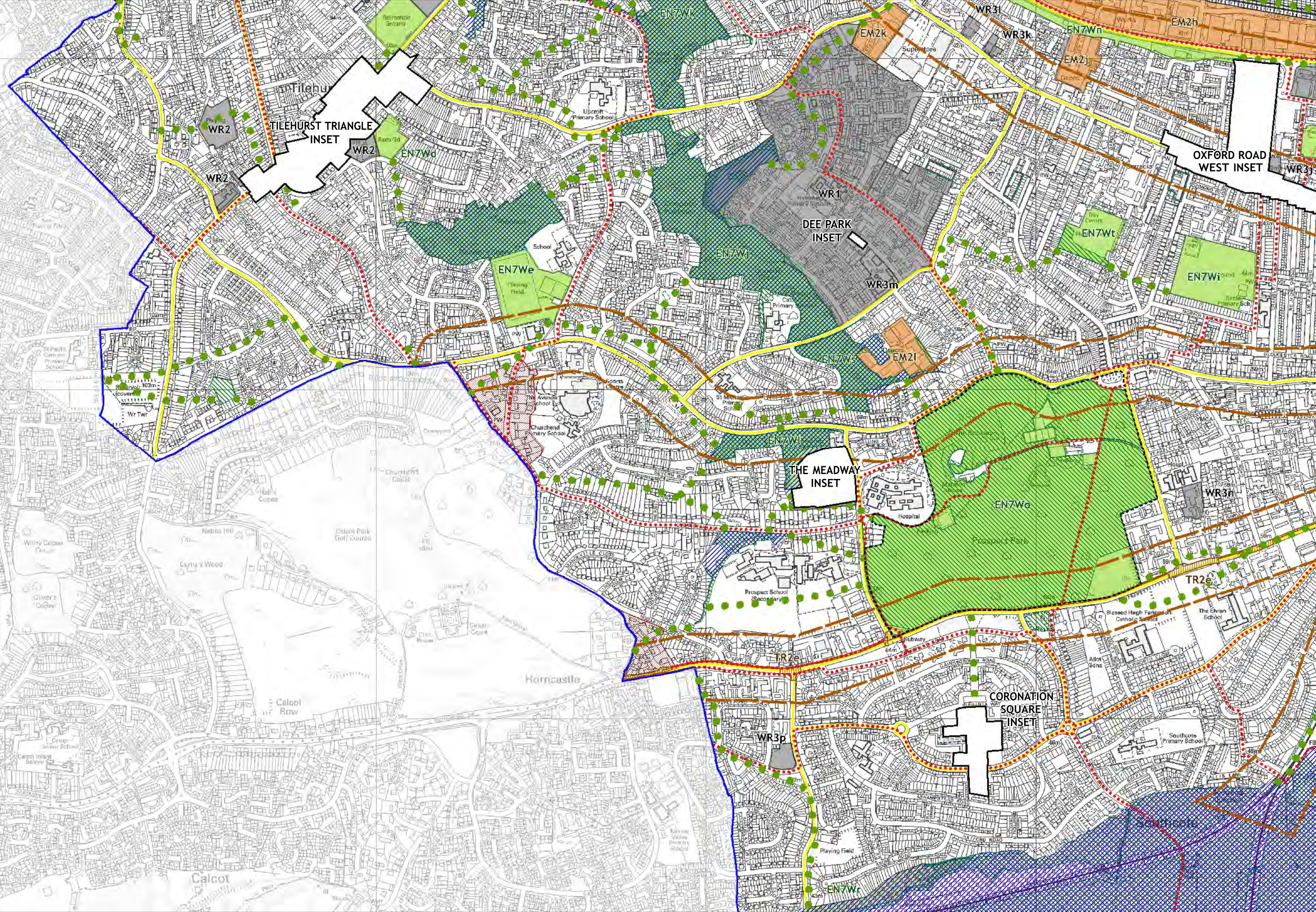
C

SCALE: 1:10000



B

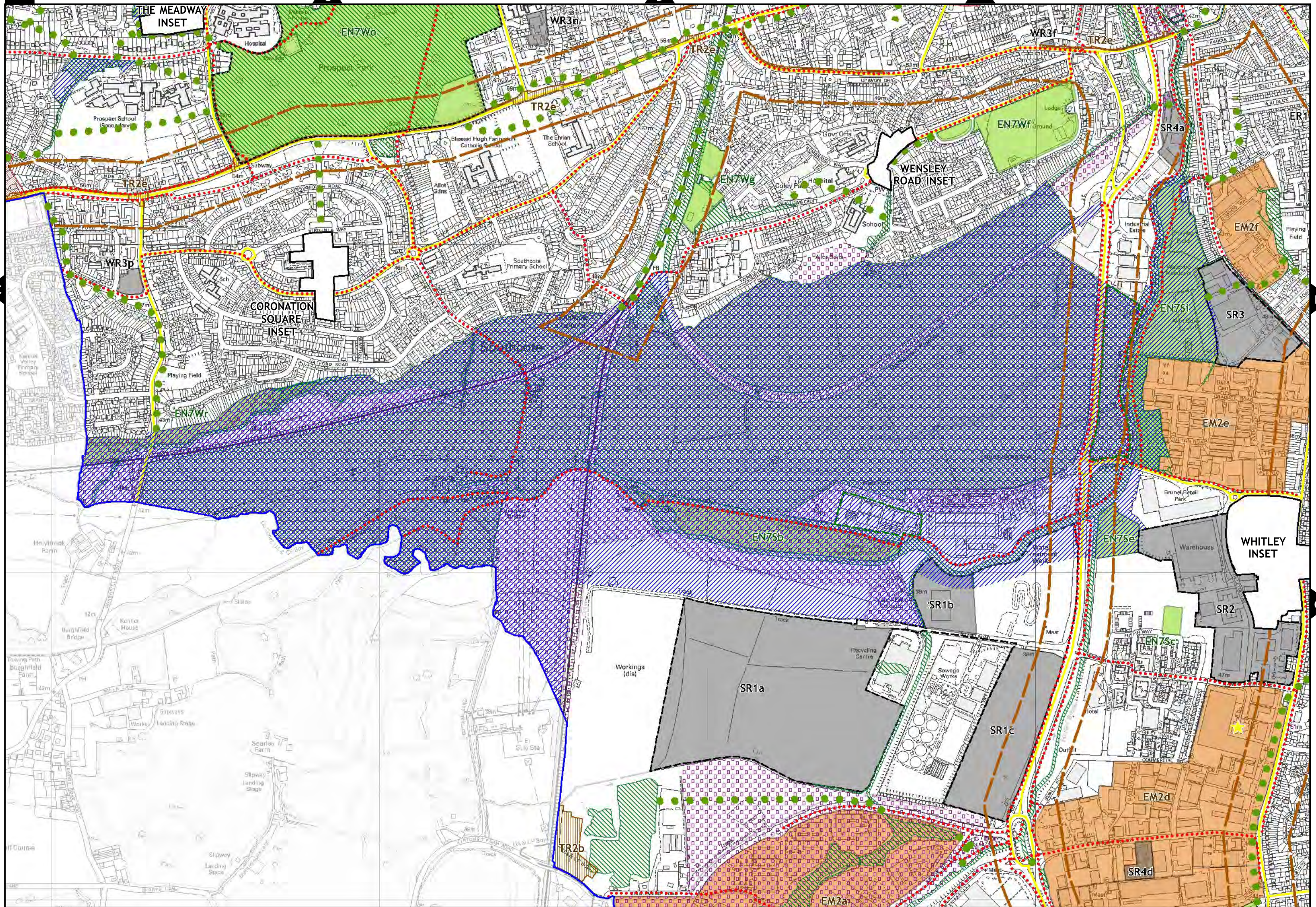
B

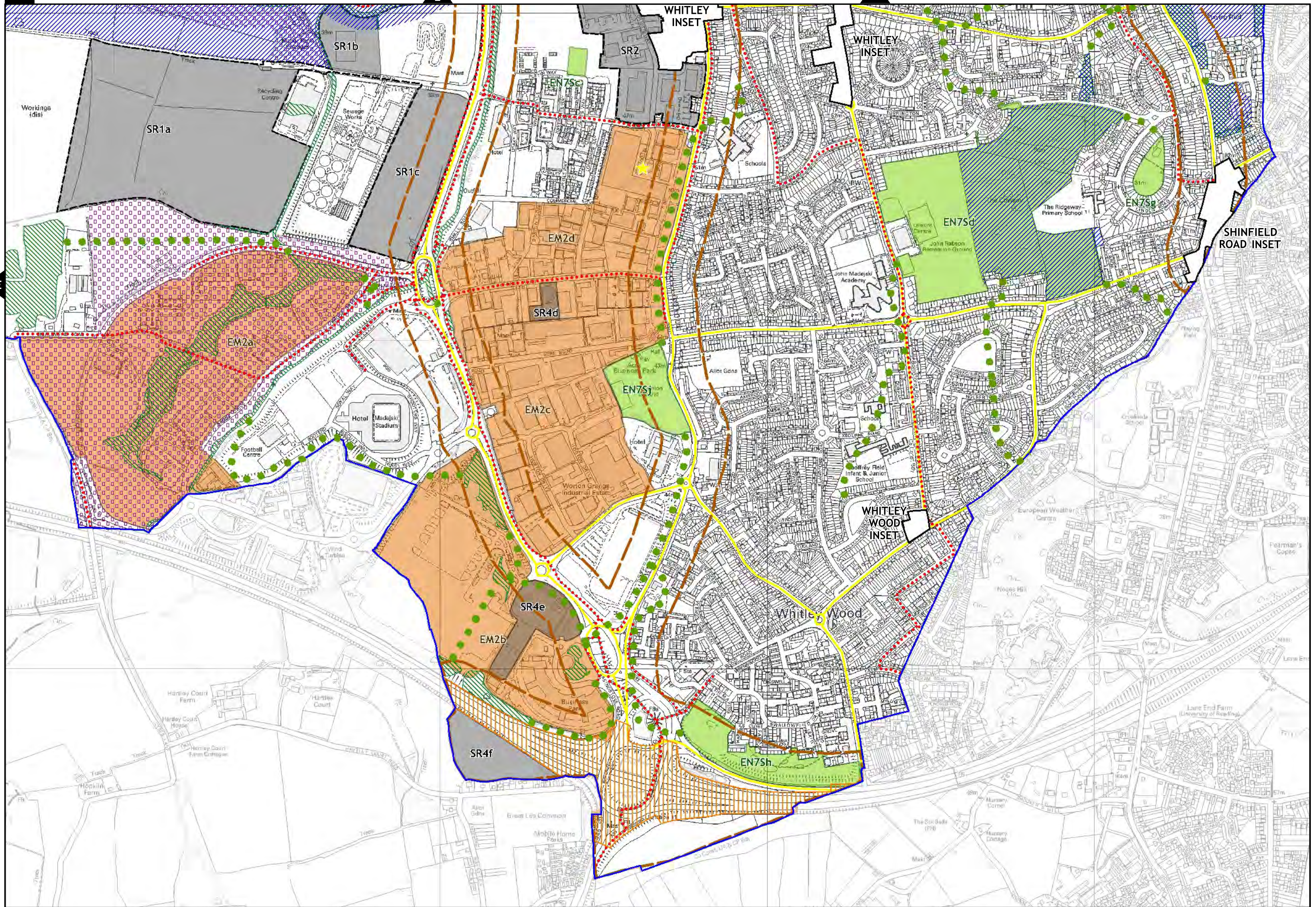


D

E

E





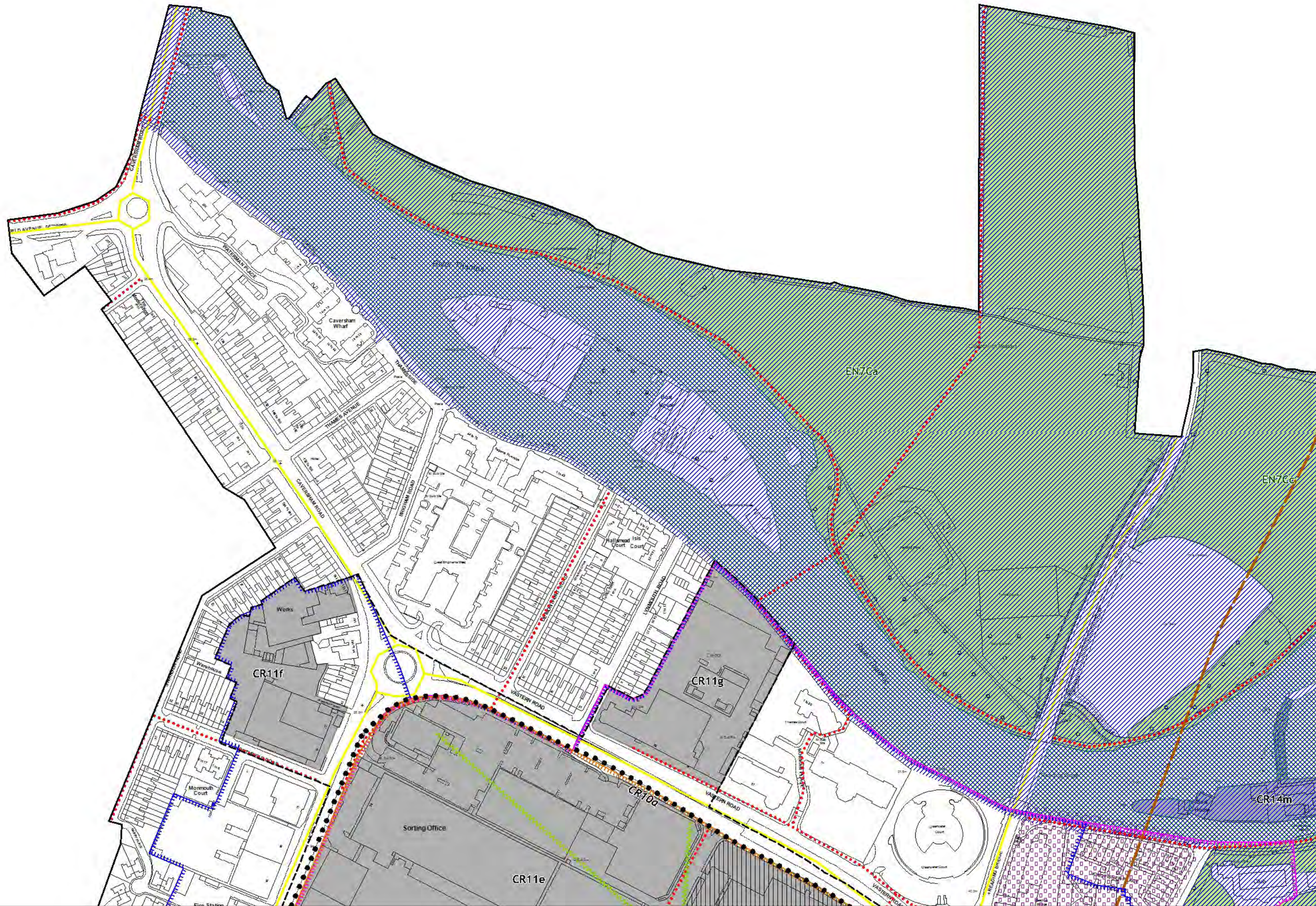
H

SCALE: 1:2500



D

D



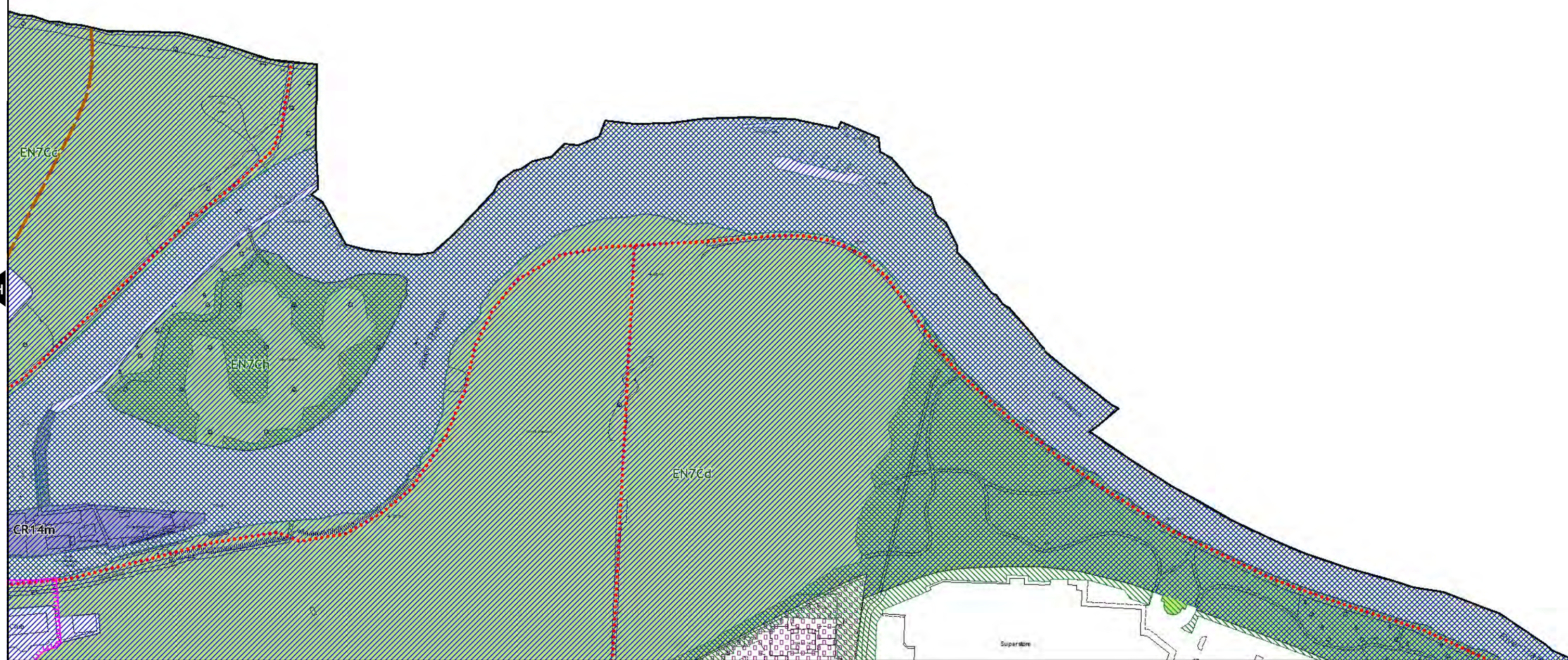


D

D

H

H



K

L

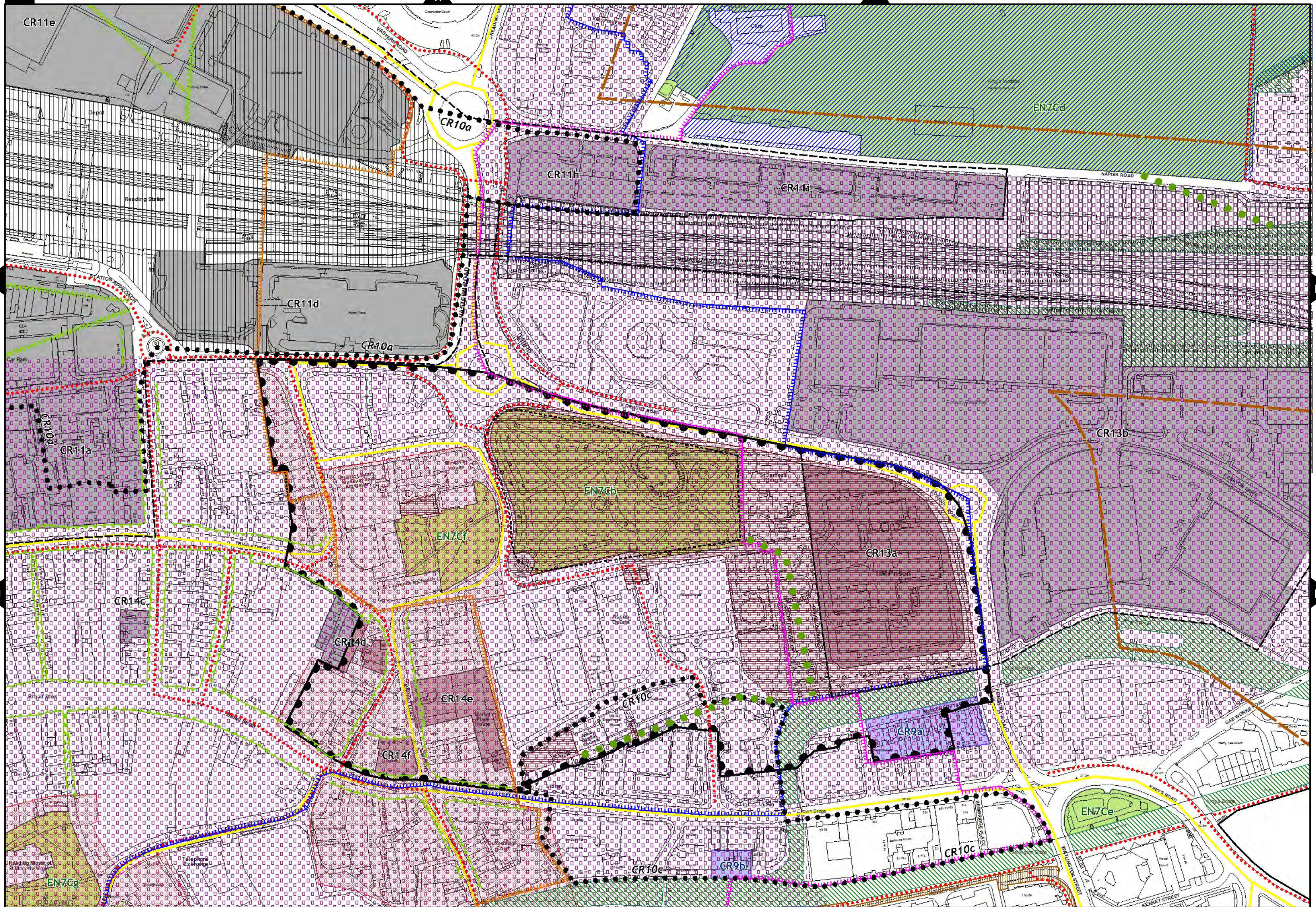
K

SCALE: 1:2500



H

I



M

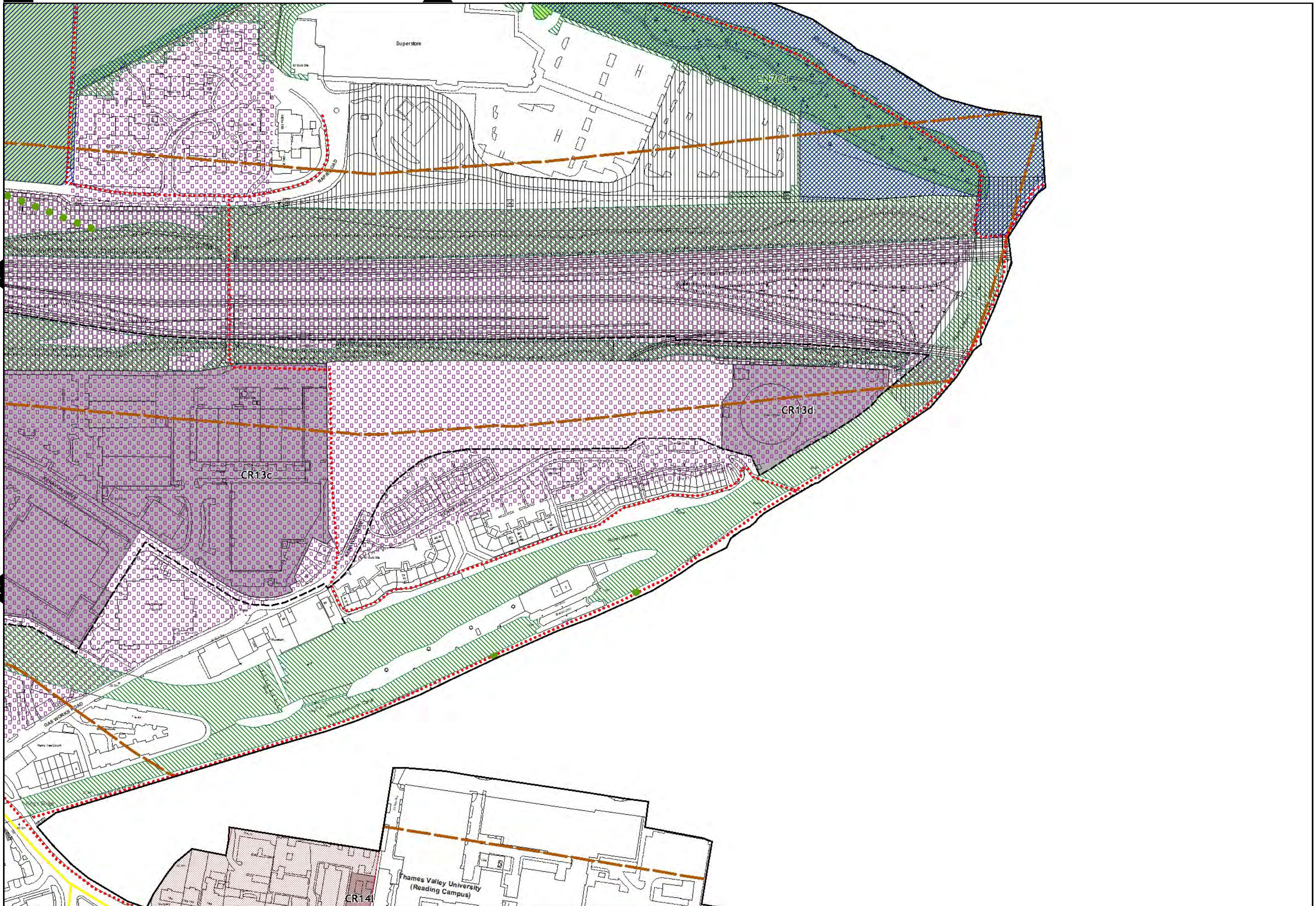
N

L

SCALE: 1:2500

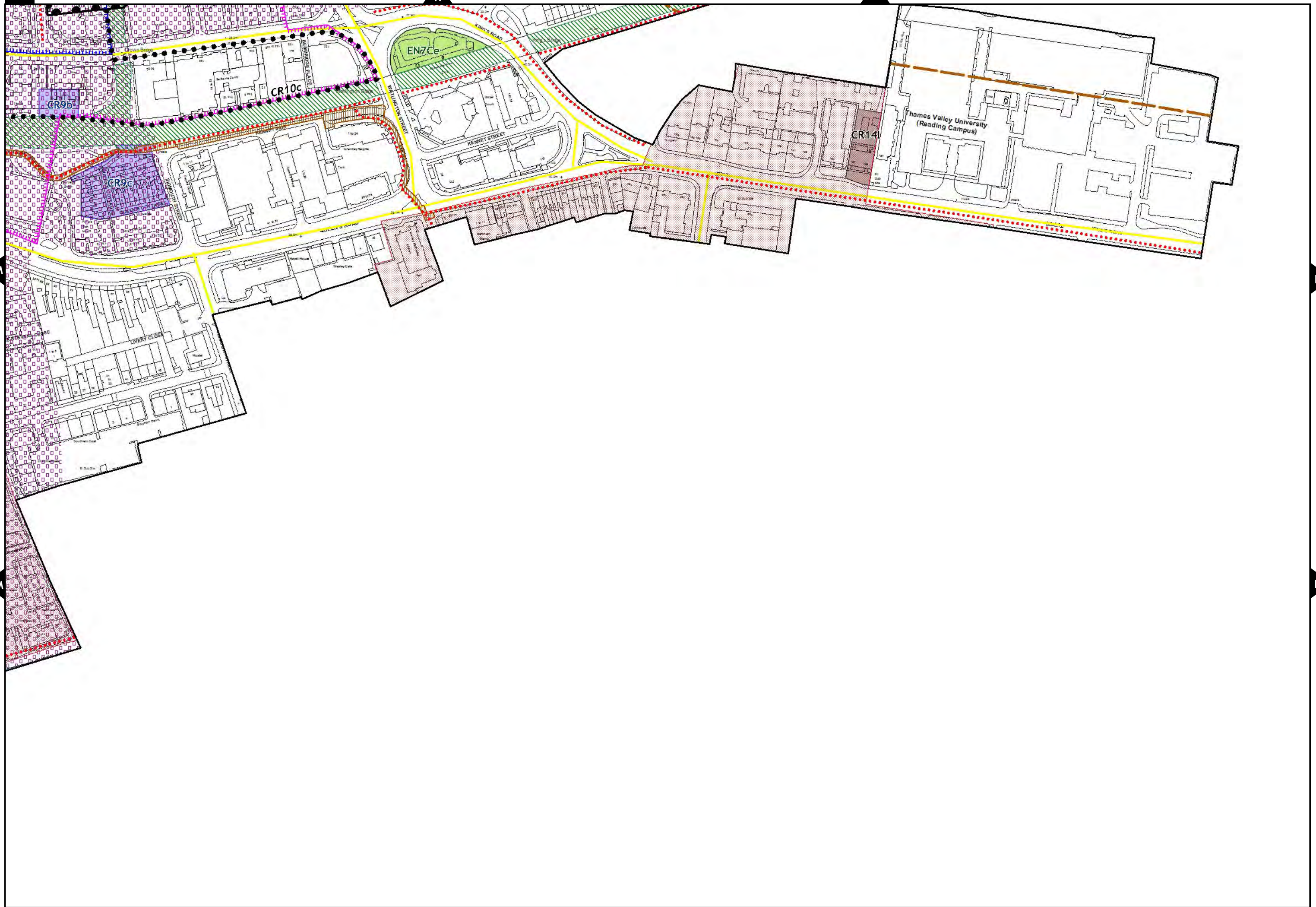


I

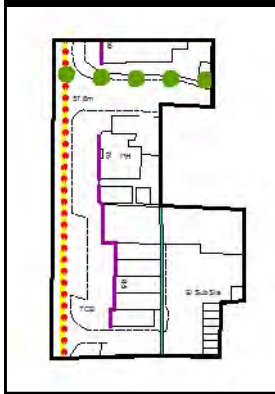


N

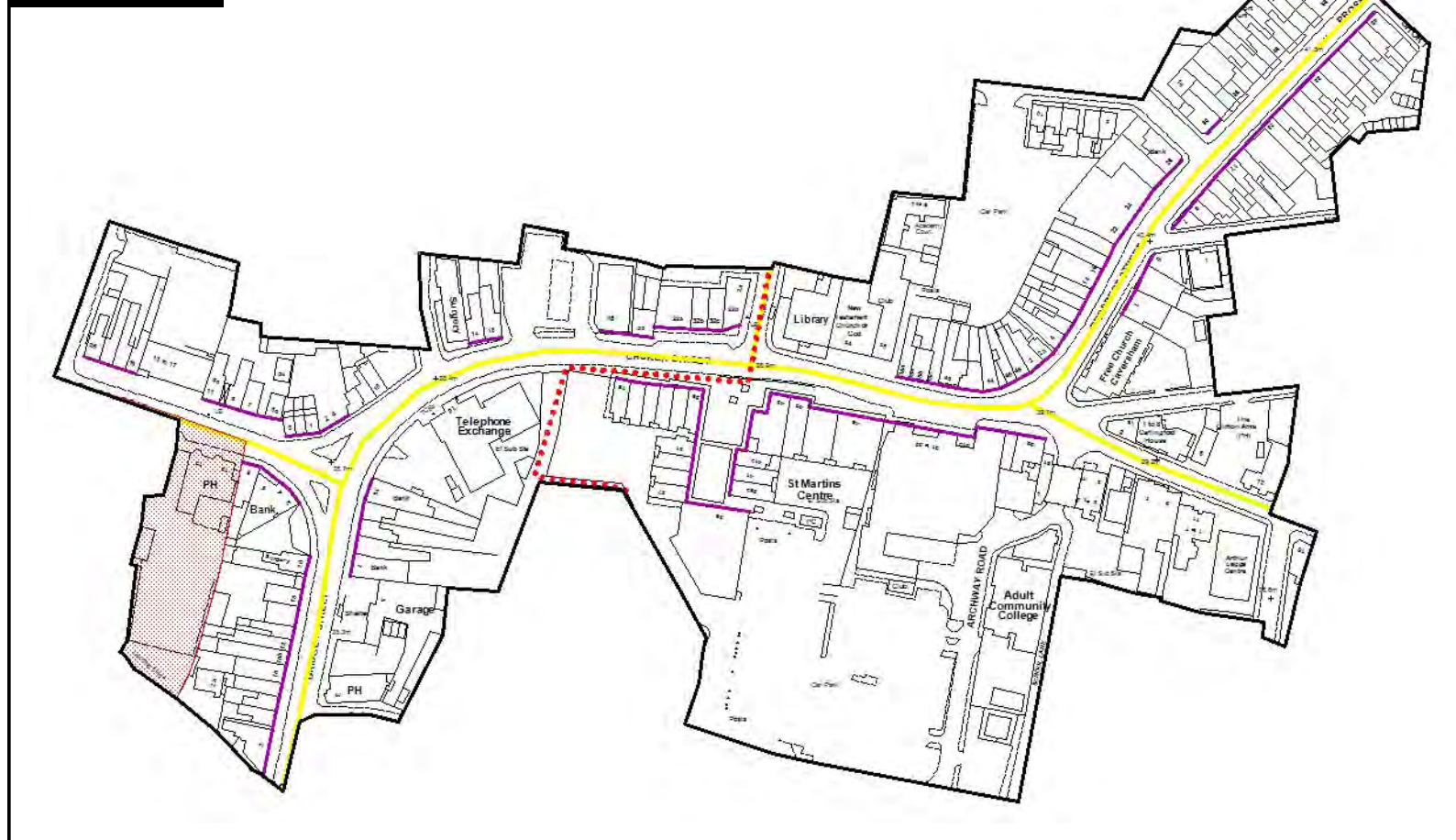
F



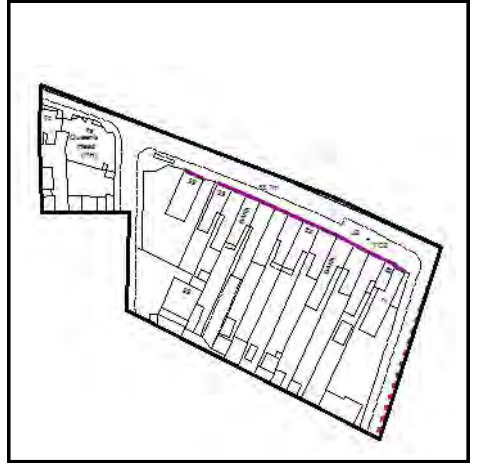
BASINGSTOKE ROAD NORTH



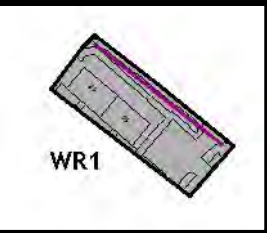
CAVERSHAM



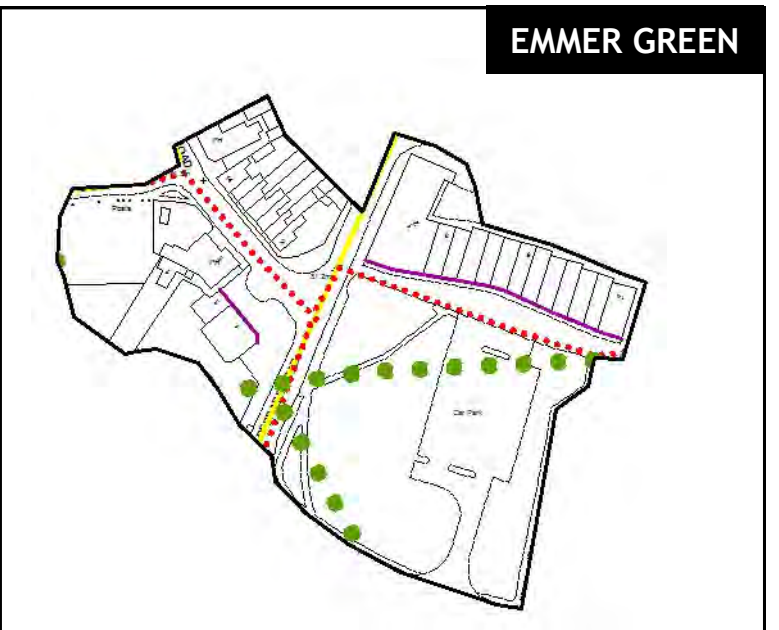
CHRISTCHURCH ROAD



DEE PARK



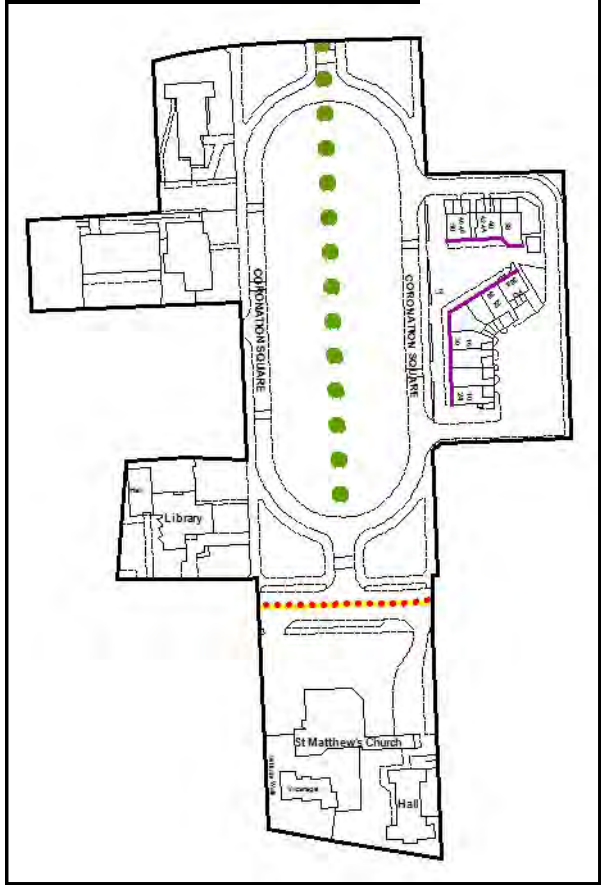
EMMER GREEN



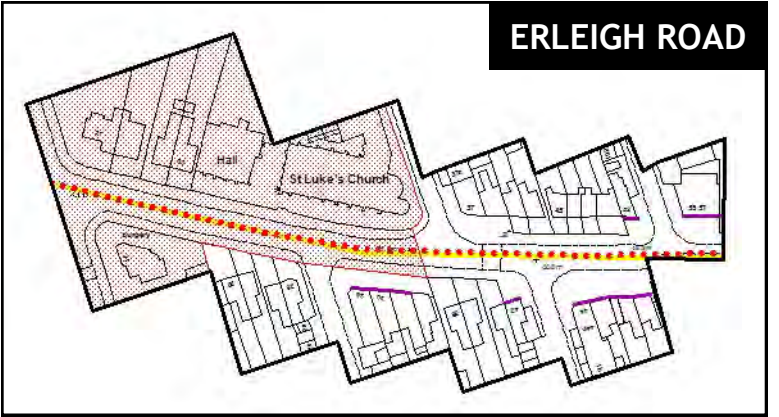
CEMETERY JUNCTION



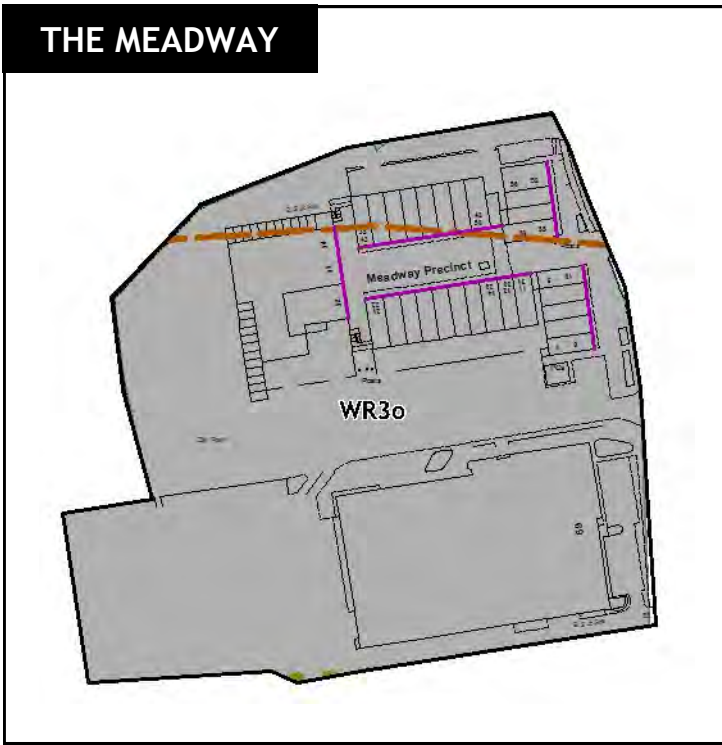
CORONATION SQUARE



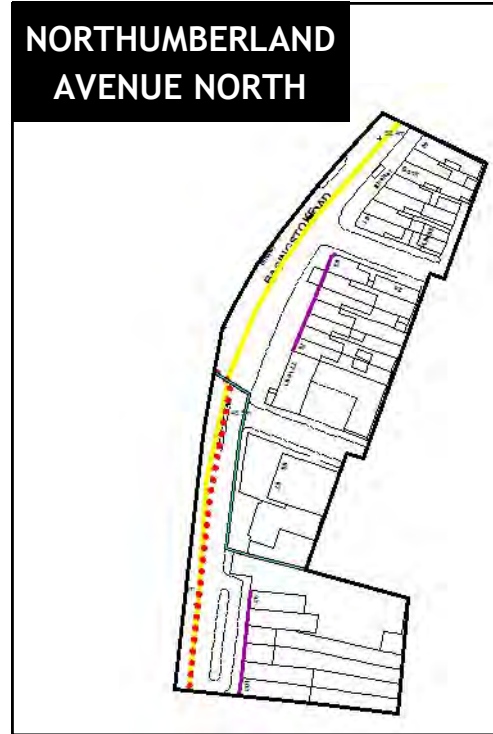
ERLEIGH ROAD



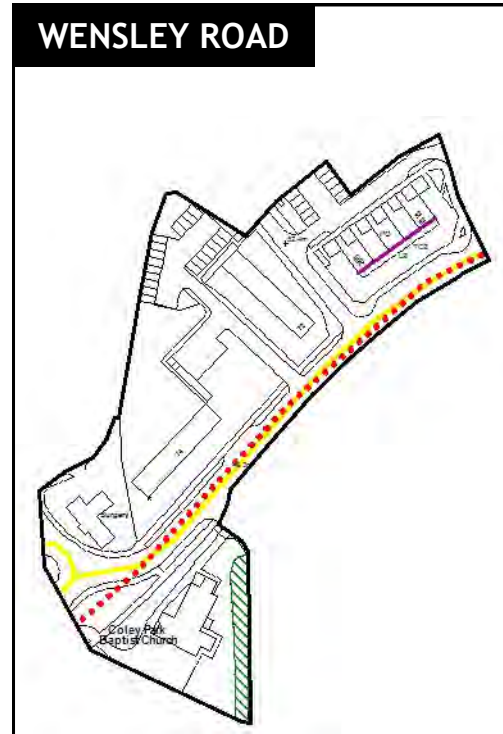
THE MEADWAY



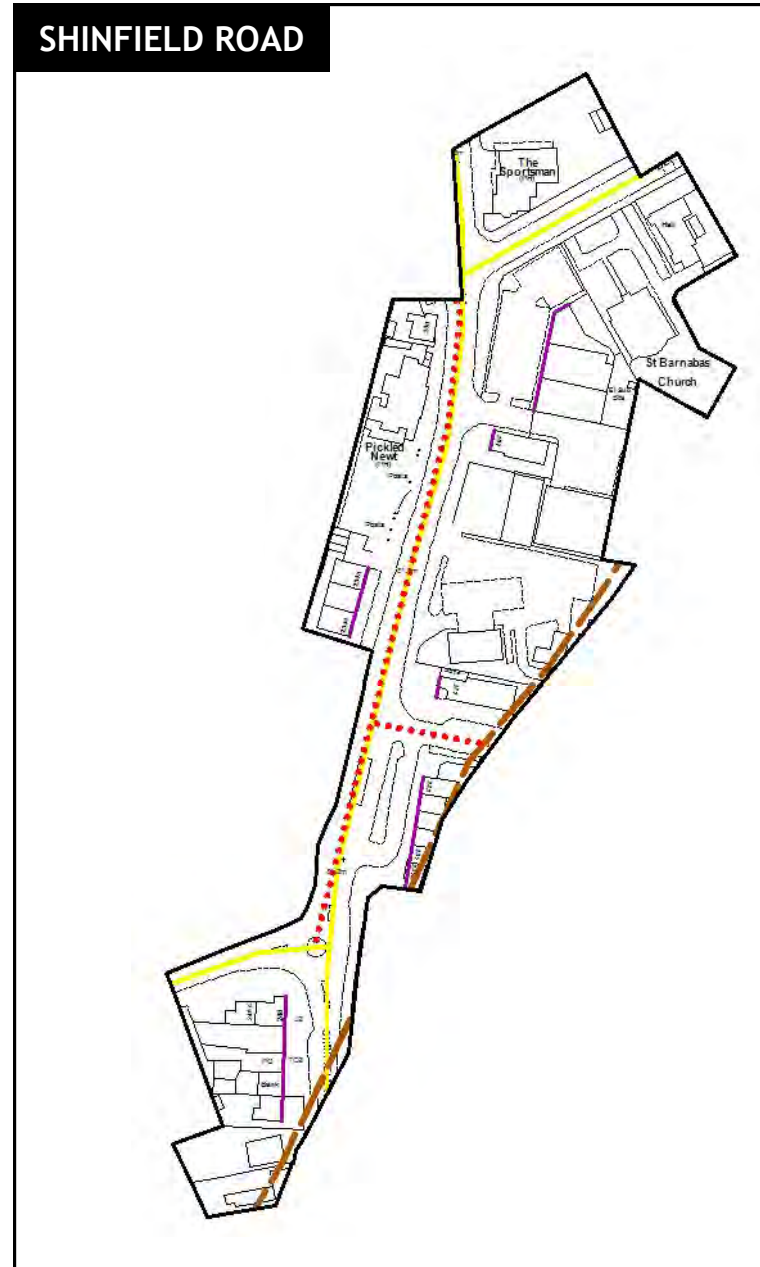
NORTHUMBERLAND AVENUE NORTH



WENSLEY ROAD



SHINFIELD ROAD



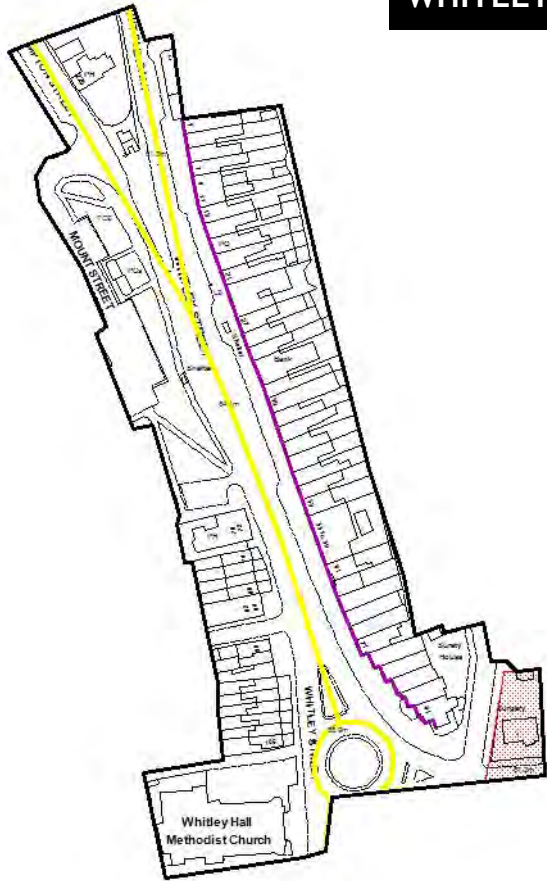
TILEHURST TRIANGLE



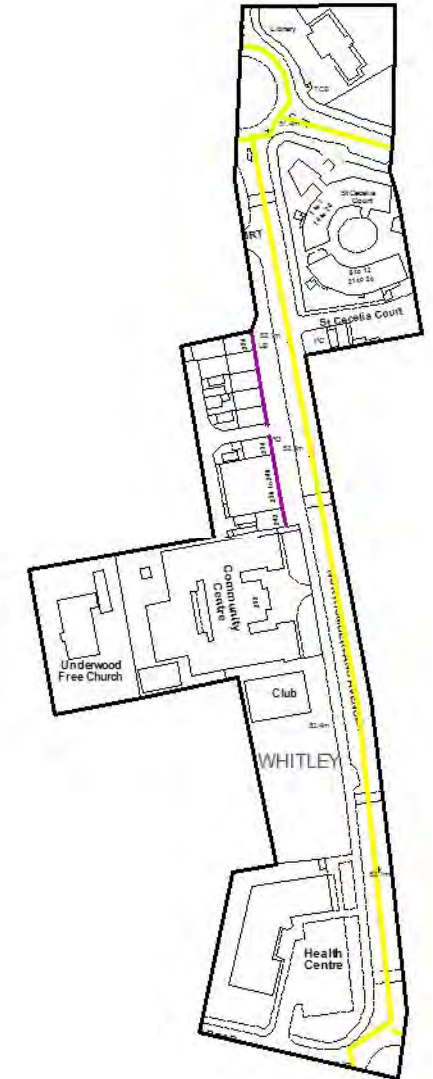


OXFORD ROAD WEST

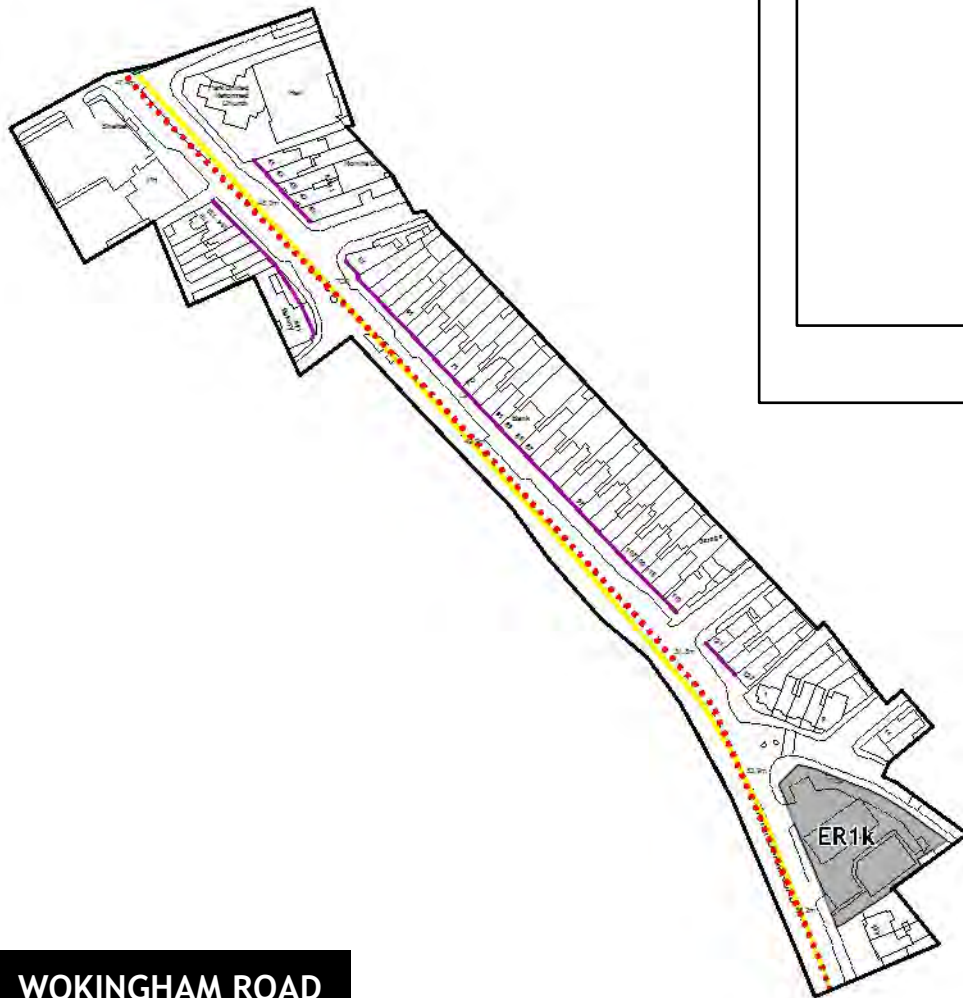
WHITLEY STREET



WHITLEY



WHITLEY WOOD



WOKINGHAM ROAD

Planning Section

Reading Borough Council

Civic Offices

Bridge Street, Reading

RG1 2LU

Tel: 0800 626540

Email: planningpolicy@reading.gov.uk

Website: www.reading.gov.uk/readingldf



Reading
Borough Council

Working better with you